

**APPENDIX 5: Naturalised Vascular Plants of the Inner Town Belt, Wellington**

**LYCOPODS**

*Selaginella kraussiana*, common on shaded forest floor, Botanic Garden, Central Park, Tinakori Hill

**FERNS**

*Pteris cretica*, uncommon, Bolton St Memorial Park, 1 plant in gully under pines at Wakefield Park

**GYMNOSPERMS**

*Cupressus macrocarpa*, macrocarpa, common in clearings alongside mature planted macrocarpa

*Pinus radiata*, radiata pine, common in clearings alongside mature radiata

**DICOT TREES and SHRUBS**

*Acer pseudoplatanus*, sycamore, common

*Arbutus unedo*, strawberry tree, occasional on forest margin, perhaps a persistent planting

*Argyranthemum frutescens*, marguerite, common on cliff banks

*Berberis darwinii*, Darwin's barberry, occasional in secondary forest and alongside tracks

*Buddleja davidii*, buddleia, occasional in young secondary scrub

*Chamaecytisus palmensis*, tree lucerne, occasional in young secondary scrub

*Chrysanthemoides monilifera*, boneseed, abundant, in secondary scrub and under pines in southern end of Town Belt (Management Areas 6-9)

*Cotoneaster glaucophyllus*, occasional, under secondary forest, and pines and in developing scrub areas

*Cotoneaster lacteus*, at Bolton St Memorial Park

*Crataegus monogyna*, hawthorn, occasional in secondary forest and scrub

*Cytisus scoparius*, Scotch broom, common to abundant in secondary scrub

*C. multiflorus*, white broom, uncommon on edge of secondary woodland, Hataitai Park

*Cyphomandra betacea*, tamarillo, 1 sapling seen under pines, Wakefield Park

*Erica lusitanica*, Spanish heath, uncommon on scrub margin, Central Park

*Escallonia rubra*, commonly planted on scrub margins

*Eucalyptus globulus*, Tasmanian blue gum, occasional seedling seen near adult tree

*Euonymus japonica*, widely planted on Town Belt, some regeneration in secondary scrub

*Fatsia japonica*, one seedling above Manchester St

*Hakea salicina*, widely planted on Town Belt, some regeneration on tracksides

- Hydrangea macrophylla*, uncommon, sometimes present on reserve margins, infrequent within secondary forest
- Hypericum androsaemum*, tutsan, uncommon, under pines, Tinakori Hill
- Ilex aquifolium*, holly, widely planted, some large specimens on Mt Victoria, regeneration under conifers, broadleaved scrub and in kanuka forest
- Laurus nobilis*, bay, common in secondary forests and scrub
- Lavatera arborea*, tree mallow, occasional in rank grassland, Mt Victoria
- Ligustrum ovalifolium*, privet, common in secondary forest and margins of forest
- Lupinus arboreus*, tree lupin, uncommon in rank grassland, Macalister Park
- Malus domestica*, apple, uncommon, in rank grassland
- Melianthus major*, Cape honey flower, one plant in clearing, Mt Victoria
- Paraserianthes lophantha*, brushwattle, common in secondary communities
- Persea americana*, avocado, one sapling on Mt Victoria (Dr C West, pers. comm.)
- Physalis peruviana*, cape gooseberry, one plant seen in garden rubbish, Prince of Wales Park
- Populus alba*, white poplar, uncommon in gully near Zoo
- Populus nigra*, black poplar, commonly planted in damp situations
- Prunus laurocerasus*, cherry laurel, common on forest margins, on Tinakori Hill found growing under pine canopy along with native trees, some large specimens on Town Belt above Bell Road
- Quercus robur*, common oak, widely planted, regeneration under adult trees will occur if site is open
- Racosperma baileyianum*, Cootamundra wattle, uncommon, Mt Victoria and Bolton St Memorial Park
- R. dealbatum*, silver wattle, common on Mt Victoria, occasional Tinakori Hill
- R. melanoxylon*, Tasmanian blackwood, common on Tinakori Hill, regenerating in secondary forest and scrub
- Rhaphiolepis xdelacourii*, Indian hawthorn, uncommon on Mt Victoria, probably not totally naturalised but a persistent planting
- Salix fragilis*, crack willow, occasional in damp places, spreading in valley near Britomart St
- Sambucus nigra*, elder, occasional on forest and scrub margins
- Solanum pseudocapsicum*, Jerusalem cherry, occasional in secondary forest and scrub, common under pines on Mt Victoria
- Teline monspessulana*, Montpellier broom, occasional on dry banks and cliffs, Hataitai Park, Botanic Garden and Mt Victoria
- Ulex europaeus*, gorse, dominant shrub in young scrublands and common invader of mown grasslands

*Viburnum tinus*, laurustinus, common under pines, Mt Victoria, Newtown Park, possibly long-persistent from original planting

#### MONOCOT CLIMBER

*Asparagus scandens*, climbing asparagus, locally common under pines and regenerating woodland, Mt Victoria

#### DICOT CLIMBERS

*Calystegia sepium*, pink bindweed, occasional on forest margins, Macalister Park

*C. silvatica*, greater bindweed, common to dominant in weed-infested gullies and on forest margins

*Clematis vitalba*, old man's beard, common to dominant throughout the Town Belt, established on forest margins, weed-infested gullies, along tracks, down streamsides, and in canopy clearings in pine forest

*Cobaea scandens*, cathedral bells, uncommon on forest margin, Tinakori Hill

*Convolvulus arvensis*, field bindweed, uncommon in secondary shrubland, Macalister Park

*Dipogon lignosus*, mile-a-minute, uncommon on scrub margin, Mt Victoria

*Elaeagnus xreflexa*, common to abundant in secondary scrub and forest, conifer plantations, and on the edges of forest. Dense growths occur around the Brooklyn Hill and on Tinakori Hill. It also occurs in native forest in the Botanic Garden and should be eradicated from these sites (not listed by Myers 1985 and not mentioned in Appendix 3 of the Botanic Garden Management Plan)

*Hedera helix*, ivy, common throughout the forests and conifer plantations

*Lonicera japonica*, Japanese honeysuckle, common to dominant on scrub and forest margins throughout the Town Belt. Also common in native forest areas of the Botanic Garden (not listed by Myers 1985 as a problem weed and not listed in Appendix 3 of the Wellington Botanic Garden Management Plan)

*Passiflora mollissima*, banana passionfruit, locally common on bush margin around Palliser Road, Mt Victoria

*Rosa canina*, dog rose, uncommon, scrub margins

*R. wichuraiana* hybrid, rambler rose, local in rank grass, Bolton St Memorial Park

*Rubus fruticosus* (ulmifolius), blackberry, common throughout, especially in rank grass and on scrub margins and steep banks

*Rumex saggitatus*, climbing dock, common in rank grass and down banks

*Senecio angulatus*, Cape ivy, occasional on scrub margins and near to housing

*S. mikanioides*, German ivy, common on scrub margins and steep banks

*Tropaeolum majus*, garden nasturtium, occasional on boundaries of reserves near to housing

*Vinca major*, periwinkle, common under forest and scrub, especially near margins

## GRASSES

- Agrostis capillaris*, browntop, common to dominant in mown and rank grasslands
- Agrostis stolonifera*, creeping bent, common in rank grasslands and mown areas
- Aira caryophylla*, common in mown areas
- Alopecurus pratensis*, meadow foxtail, uncommon in moist areas
- Anthoxanthum odoratum*, sweet vernal, abundant in rank grasslands
- Arrhenatherum elatius*, tall oat grass, common in damp rank grasslands
- Arundinaria japonica*, Japanese bamboo, uncommon, a few plantings on edges of reserves
- Avena fatua*, wild oat, uncommon in rank grassland
- Bambusa* sp., bamboo, uncommon on edge of reserve, Mt Victoria
- Briza maxima*, quaking grass, common in dry grasslands
- B. minor*, shivery grass, uncommon
- Bromus catharticus*, prairie grass, occasional in rank grassland
- B. diandrus*, rippgut brome, uncommon in dry grasslands
- B. mollis*, soft brome, uncommon
- Cortaderia selloana*, pampas grass, commonly planted in borders
- Cynodon dactylon*, Indian doab, uncommon in dry grassland
- Cynosurus cristatus*, crested dogtail, uncommon in rank grassland
- Cynosurus echinatus*, rough dogstail, one plant collected on walking track, Mt Victoria
- Dactylis glomerata*, cocksfoot, abundant to dominant in rank grassland
- Digitaria sanguinalis*, summer grass, occasional along tracks and roadsides
- Ehrharta erecta*, veld grass, common to dominant under native and exotic forest cover, common in rank grasslands, still spreading through the Town Belt
- Elytrigia repens*, couch, common in rank grasslands
- Festuca nigrescens*, Chewings fescue, common to dominant in mown grasslands
- Holcus lanatus*, Yorkshire fog, common in rank grasslands
- Hordeum murinum*, barley grass, occasional in dry grasslands
- Lolium perenne*, perennial rye, common in mown and rank grasslands
- Paspalum dilatatum*, occasional, along roadsides, Mt Victoria
- Pennisetum clandestinum*, kikuyu grass, uncommon tinakori Hill
- Phleum pratense*, timothy, uncommon in rank grassland
- Poa annua*, common on open sites and in mown grassland
- P. pratensis*, common in rank grassland
- P. trivialis*, common in damp grasslands
- Vulpia bromoides*, hair grass, uncommon in open grassland, Hataitai Park

## MONOCOTYLEDONOUS HERBS

- Agapanthus orientalis*, on cliffs above Oriental Bay
- Allium triquetrum*, onion weed, occasional on reserve margins
- Arum italicum*, uncommon, in regenerating woodland, Mt Victoria
- Crocosmia xrocosmiiflora*, montbretia, common on reserve margins and in damp second-growth
- Freesia refracta*, local, Bolton St Cemetery
- Hedychium gardnerianum*, kahili ginger, uncommon on reserve margins, Prince of Wales Park, Tinakori Hill
- Hemerocallis fulva*, orange day lily, local in rank grassland Bolton St Cemetery
- Iris foetidissima*, stinking iris, occasional in damp secondary forest and along streambanks
- Juncus effusus*, soft rush, occasional in wet flushes
- Leucojum aestivum*, snowflake, local, Bolton St Cemetery
- Nothoscordum inodorum*, local, Bolton St Cemetery
- Scilla non-scripta*, bluebell, local, Bolton St Cemetery
- Sisyrinchium iridifolium*, purple-eyed grass, common in dry grasslands
- Sparaxis tricolor*, local, in rank grassland Bolton St Cemetery
- Tradescantia fluminensis*, wandering willy, abundant to dominant under secondary and mature forest and alongside streams
- Tritonia lineata*, local, in rank grass, Bolton St Cemetery
- Watsonia ardernei*, local, in rank grass, Bolton St Cemetery
- Zantedeschia aethiopica*, arum, occasional in damp areas,

## DICOTYLEDONOUS HERBS

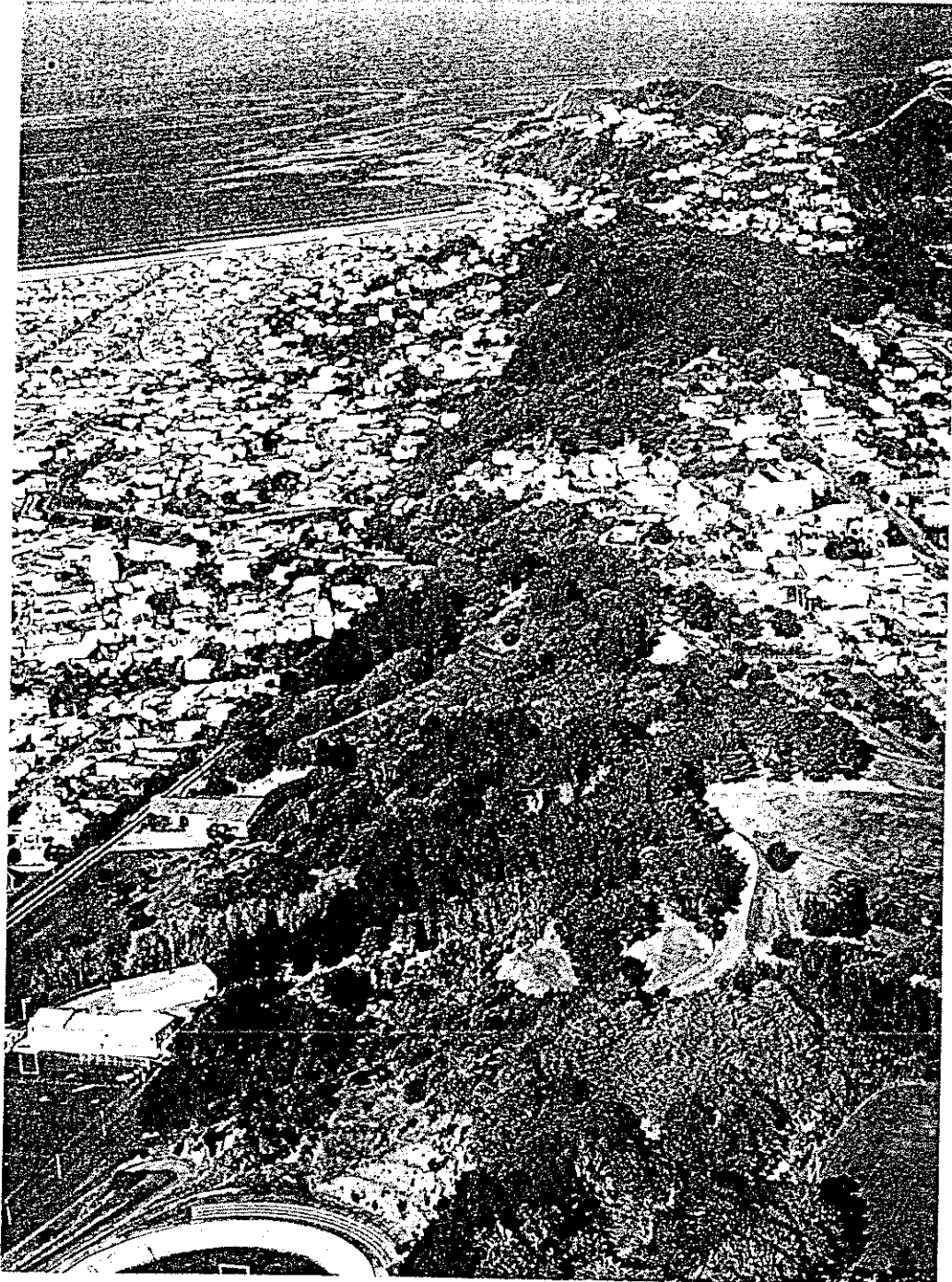
- Acanthus mollis*, bear's breeches, occasional on forest margins, near the Zoo, Mt Victoria
- Achillea millefolium*, yarrow, abundant in mown and rank grasslands
- Aeonium haworthii*, local, on cliffs above Oriental Parade
- Ageratina adenophora*, Mexican devil, local on greywacke cliffs, Botanic Garden, Mt Victoria
- Anagallis arvensis*, scarlet pimpernel, occasional in grassland
- Anthemis cotula*, stinking mayweed, uncommon in rank grassland, Zoological Gardens
- Arctotheca calendula*, Cape weed, common in mown grassland and open sites
- Bellis perennis*, daisy, abundant in mown and rank grasslands
- Brassica rapa* ssp. *sylvestris*, wild turnip, common in rank grassland
- Capsella bursa-pastoris*, shepherds purse, common on road and track edges
- Cardamine hirsuta*, bitter cress, occasional in secondary forest
- Centaureum erythraea*, centaury, occasional in dry grasslands
- Centranthus ruber*, spur valerian, common on greywacke cliffs and banks
- Cerastium fontanum* ssp. *triviale*, mouse-ear chickweed, occasional in rank grasslands

*Chenopodium album*, fathen, uncommon, in rank grassland Mt Victoria  
*Chrysanthemum segetum*, corn marigold, uncommon, in rank grassland, Mt Victoria and above Prince of Wales Park  
*Cirsium vulgare*, Scotch thistle, common in grassland  
*Conium maculatum*, hemlock, occasional in rank grassland  
*Conyza bilbaoana*, fleabane, common in rank grassland and open sites  
*Coronopus didymus*, twin cress, occasional on track sides  
*Cotula coronopifolia*, uncommon in damp muddy clearing, Macalister Park  
*Crassula multicava*, fairy crassula, local on greywacke cliffs, Mt Victoria, Tinakori Hill, and around overgrown rock wall at Central Park  
*Crepis capillaris*, hawksbeard, common in grassland  
*Cymbalaria muralis*, ivy-leaved toad flax, occasional in shaded woodland, Tinakori Hill and Mt Victoria  
*Dahlia excelsa*, tree dahlia, uncommon, one plant in rank grassland just below Crawford Rd (possibly not in Town Belt)  
*Daucus carota*, wild carrot, occasional in dry grassland  
*Dichondra micrantha*, Mercury Bay weed, in mown lawn Mt Victoria  
*Digitalis purpurea*, foxglove, occasional in rank grassland and on edges of damp forest  
*Erigeron karvinskianus*, Mexican daisy, common along tracks and banks  
*Erodium cicutarium*, storksbill, occasional in low grasslands  
*Euphorbia peplus*, milkweed, uncommon, margin of secondary forest, Mt Victoria  
*Foeniculum vulgare*, fennel, common, rank grasslands and edge of scrub and forest  
*Fumaria muralis*, fumitory, common in rank grassland and down banks  
*Galinsoga parviflora*, common in open grassland and recently disturbed soils  
*Galium aparine*, cleavers, occasional on damp forest margins  
*Geranium molle*, dovesfoot, common in mown grasslands  
*G. robertianum*, herb Robert, occasional in secondary forest  
*Gnaphalium coarctatum*, purple cudweed, occasional on forest edge, Botanic Garden  
*Hypochoeris radicata*, catsear, abundant in grasslands  
*Impatiens sodenii*, shrub balsam, uncommon, with garden waste on edge of pine forest, Connaught Tce  
*Lamium purpureum*, red dead nettle, uncommon along track, Mt Victoria  
*Lapsana communis*, nipplewort, occasional under pines, Tinakori Hill  
*Lathyrus latifolius*, everlasting pea, uncommon on edge of scrub and along steep banks  
*Lepidium pseudotasmanicum*, narrow-leaved cress, uncommon on trackside, Tinakori Hill  
*Linaria purpurea*, common on roadsides  
*Linum bienne*, pale flax, uncommon in rank grasslands  
*Lotus pedunculatus*, occasional in rank grasslands and along banks

*Lunaria annua*, honesty, uncommon on secondary forest margin, Kelburn Park  
*Lythrum hyssopifolia*, loosestrife, uncommon, in wet flushes  
*Matricaria matricarioides*, rayless chamomile, uncommon in low grassland, Tinakori Hill  
*Medicago arabica*, spotted bur medick, uncommon, along walking track, Mt Victoria  
*Melissa officinalis*, lemon balm, occasional on forest margin  
*Mentha pulegium*, pennyroyal, common in mown and rank grasslands  
*Modiola caroliniana*, creeping mallow, uncommon on track edges, Zoological Gardens  
*Mycelis muralis*, wall lettuce, occasional under pine forest  
*Orobanche minor*, uncommon parasitising red clover, Botanic Garden  
*Oxalis articulata*, sourgrass, uncommon on scrub edge, near Britomart Street  
*O. latifolia*, fishtail oxalis, uncommon in rank grassland  
*O. pes-caprae*, Bermuda buttercup, alongside walking path above Oriental Bay  
*O. purpurea*, large-flowered oxalis, two plants in rank grass, Prince of Wales Park  
*Pastinaca sativa*, wild parsnip, locally abundant in damp grassland, Tanera Park  
*Pelargonium xhortorum*, zonal pelargonium, on scrub margin near Hay St  
*Pericallis xhybrida*, cineraria, uncommon on tracksides under pines, Tinakori Hill  
*Petroselinum crispum*, wild parsley, occasional in open grassland  
*Phytolacca octandra*, inkweed, occasional in forest clearings on disturbed soils  
*Picris echioides*, common, in rank grass and along tracks  
*Plantago lanceolata*, narrow-leaved plantain, abundant in grasslands  
*P. major*, broad-leaved plantain, occasional in damp grassland  
*Polygonum aviculare*, wireweed, common on roadsides and paths  
*P. persicaria*, willow weed, local in wet area, Tanera Park  
*Prunella vulgaris*, selfheal, common in mown grasslands and along tracks  
*Ranunculus repens*, creeping buttercup, occasional in damp grassland  
*Raphanus raphanistrum* ssp. raphanistrum, wild radish, common in rank grasslands  
*Reynoutria japonica*, Asiatic knotweed, uncommon, under border trees at Tanera Park, on roadside slope above Owen St  
*Rumex acetosella*, sheep's sorrel, occasional in grassland  
*Rumex obtusifolius*, broadleaved dock, abundant in rank grasslands  
*Sagina procumbens*, pearlwort, occasional along tracks and in damp grassland  
*Sedum praealtum*, shrubby stonecrop, local on banks Mt Victoria  
*Senecio bipinnatisectus*, Australian fireweed, uncommon in forest clearing, Tinakori Hill  
*S. glastifolius*, holly-leaved senecio, common to abundant in rank grassland and early successional scrub especially around Newtown Parks  
*S. glomeratus*, fireweed, uncommon on track sides, Botanic Garden  
*S. jacobaea*, ragwort, occasional in rank grassland  
*S. skirrhodon*, gravel groundsel, uncommon on roadside, Mt Victoria

- S. vulgaris*, groundsel, uncommon along tracks
- Silene gallica*, catchfly, occasional in damp grassland
- Sisymbrium officinale*, hedge mustard, occasional in rank grassland and open sites
- Solanum chenopodioides*, velvet nightshade, common under conifer and secondary forest
- S. nigrum*, black nightshade, occasional on scrub and forest margins
- S. tuberosum*, potato, uncommon on edge of forest
- Soliva sessilis*, Onehunga weed, common in mown grasslands
- Sonchus oleraceus*, sow thistle, common in rank grasslands and on tracks
- Spergula arvensis*, spurrey, occasional in damp or muddy sites
- Stachys silvatica*, hedge stachys, common on scrub and forest margins
- Stellaria media*, chickweed, common in rank grassland and recently disturbed sites
- Symphytum xuplandicum*, Russian comfrey, one clump amongst garden waste dumped on edge of forestland, near Britomart St
- Taraxacum officinale*, dandelion, abundant in grasslands
- Trifolium arvense*, haresfoot trefoil, uncommon on banks
- T. dubium*, suckling clover, uncommon in grasslands, Mt Victoria
- T. pratense*, red clover, common in rank grasslands
- T. repens*, white clover, abundant in grasslands
- T. subterranean*, subterranean clover, uncommon, in grassland alongside track above Grant Rd
- Veronica persica*, scrambling speedwell, common in damp grassland, Tanera Park
- Vicia hirsuta*, hairy vetch, occasional in rank grassland, Tanera Park
- V. sativa*, vetch, common in rank grassland and on banks





# Wellington Town Belt Management Plan

## Background Report 1

### Ecology

WELLINGTON TOWN BELT  
MANAGEMENT PLAN REVIEW

Background Report 1

ECOLOGY

Boffa Miskell Ltd

April 1992

ISBN 0-909036-10-1