

INDIGENOUS HIGHER PLANTS (FERNS, FLOWERING PLANTS) OF
MT OLIVE†, S. ARTHUR RA, N.W. NELSON, 4000-4800 FT

†Ghd ref. S 19 939289, alt. 4800 ft (1460 m)

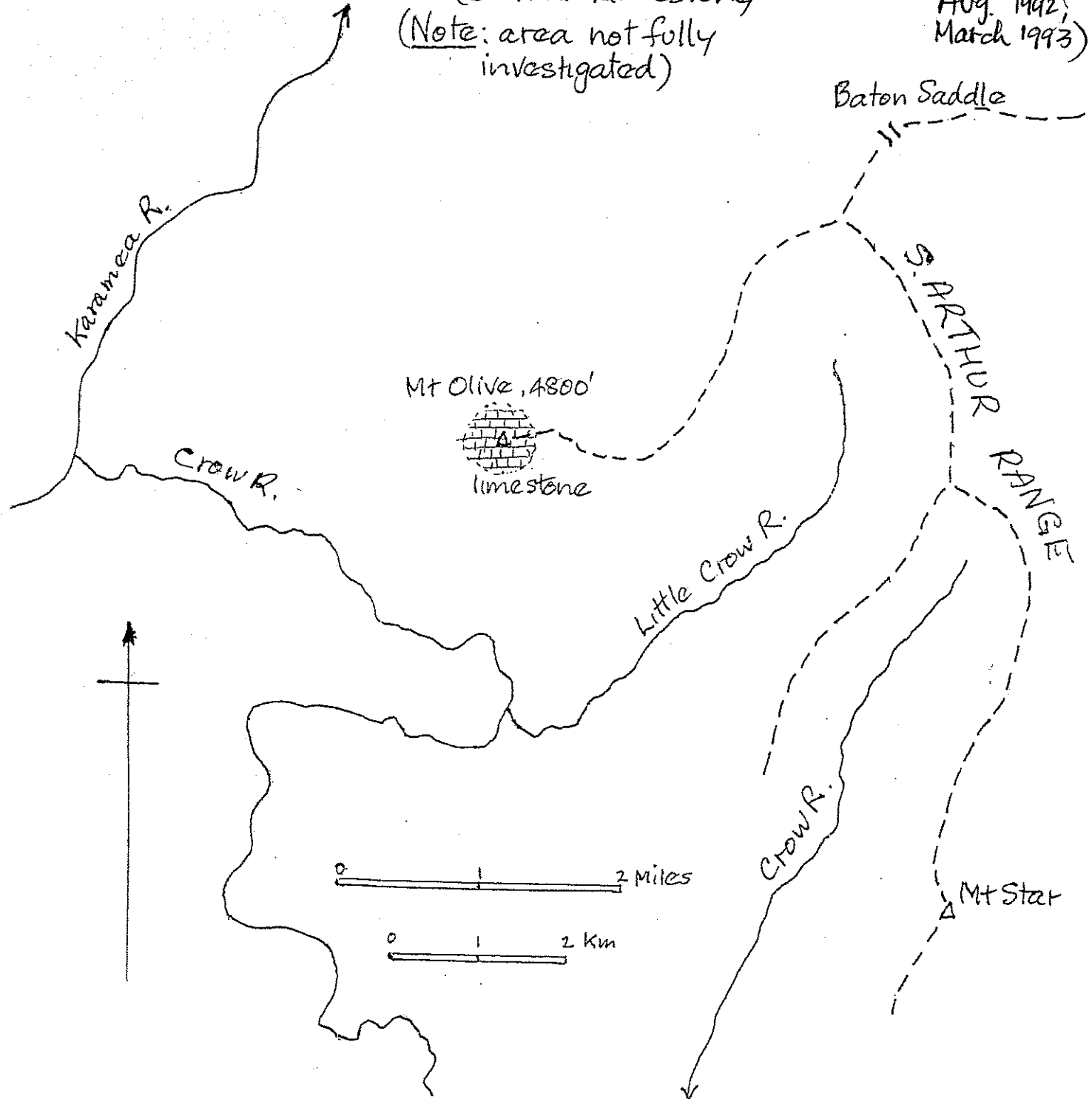
A.P. Druce, Wellington, May 1983 (revised June 1984,

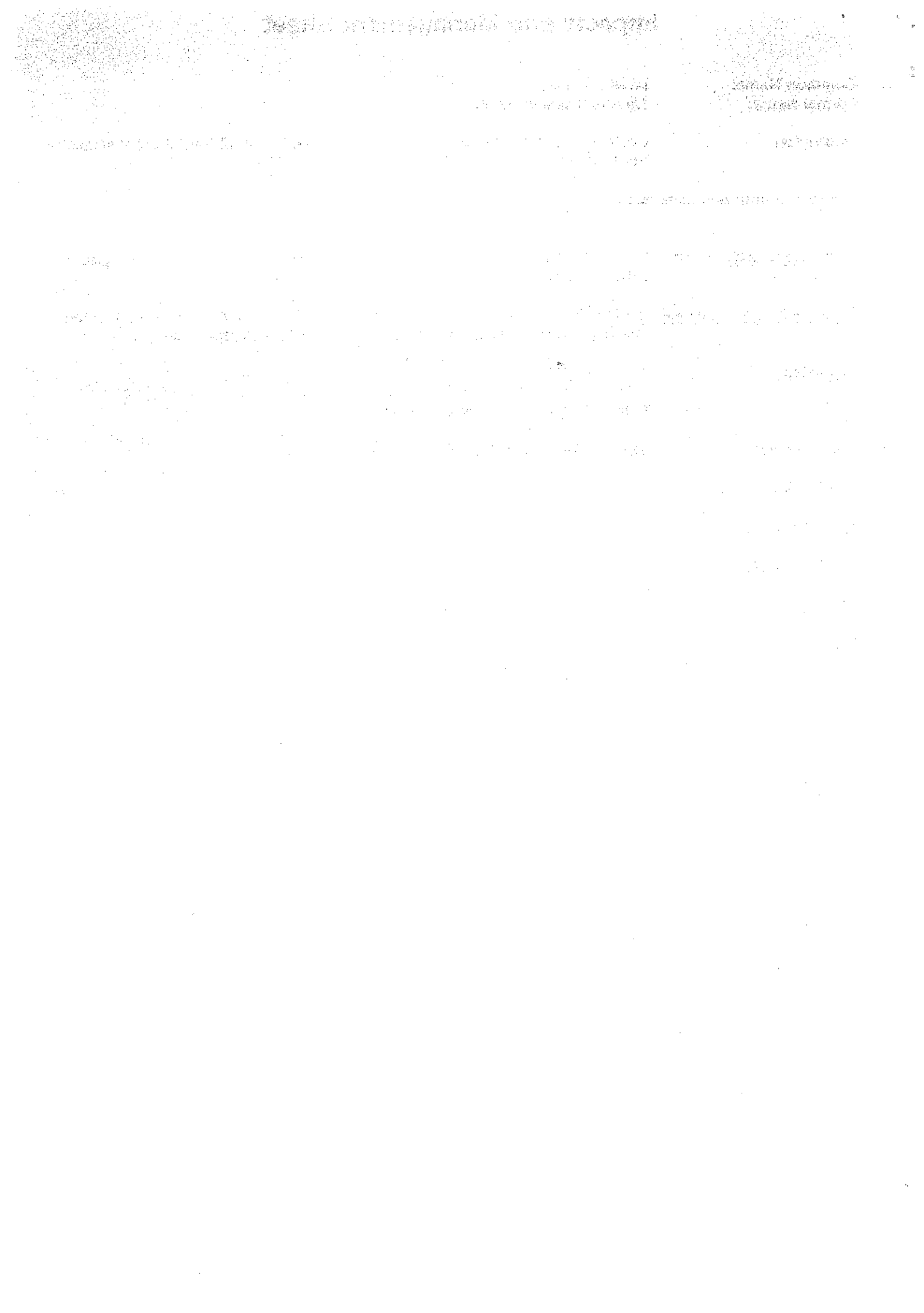
Based on visit March 1983

June 1986,
Nov. 1988,
July 1990,
May 1991,
Aug. 1992,
March 1993)

Rocks: indurated limestone
(Summit Limestone)

(Note: area not fully
investigated)





(unc) - uncommon

DICOT TREES

Nothofagus menziesii
Pseudopanax sp. (unnamed; included in P. colensoi, as var. fiordensis and as var. ternatus, by Wardle 1968)

DICOT SHRUBS

Coprosma ciliata ssp. ciliata
C. depressa
C. rugosa ssp. rugosa
Dracophyllum uniflorum var. unifl.
Gaultheria crassa
G. sp. (unnamed; included in G. depressa as var. novae-zelandiae, by Franklin 1962)
Hebe albicans var. albicans
H. canterburiensis
H. topiaria
H. sp. (unnamed) (lvs up to 4x cm, elliptic-oblong, bright green; upper surface very glossy; corolla tube very short, = or < calyx; corolla lobes obtuse; capsule pubescent)
H. albicans x H. sp. (unnamed) (unc)
Helictysum intermedium var.
Leucopogon fraseri s.s.
Melicytus alpinus s.s.
Myrsine nummularia
Olearia nummularifolia var. (lvs distinctly longer than broad, rather than suborbicular as in var. nummularifolia)
Pimelea oreophila

FERNS

Blechnum penna-marina
Cystopteris tasmanica

Grammitis patagonica

Hypolepis millefolium
Polystichum vestitum

ORCHIDS

Corybas macranthus

GRASSES

Agrostis dyeri s.s.
A. personata

Chionochloa pallens ssp. pallens

C. sp. (unnamed) (C. flavescens auct. South Island, non C. flavescens Zotov)

Deschampsia tenella

Elymus sp. (aff. E. tectisetus)

(Series 2 of Löve and Connor, 1982) (lvs ± glaucous; awns 4-6 cm long)

Microlaena colensoi

Festuca sp. (cf. F. matthewsii) (tufted, but not tussock-forming; glaucous)

Lachnagrostis sp. (unnamed; included in L. filiformis, as var. semiglabra, by Zotov 1965)

Poa breviglumis

P. cita ssp. cita

P. colensoi

Rytidosperma setifolium

Trisetum sp. (unnamed) (plants slender; lf sheath glabrous, or nearly so; lf blade flat, up to 2.5 mm wide, margins smooth)

SEDGES

Carex acicularis (slender form)

C. libera

C. wakatipu s.s.

C. sp. (unnamed) (lvs channelled, green to brownish green, vs. recurved; spikes 3-5, vs. approximate; stigmas 3)

Schoenus pauciflorus s.s. ("slender form" of Edgar 1970, p. 194)

Uncinia caespitosa var.

U. clavata

U. divaricata

U. fusco-vaginata var. (plants glaucous)

U. sp.

RUSHES

Luzula migrata

L. subclavata

MONOCOT HERBS OTHER THAN ORCHIDS, GRASSES, SEDGES, RUSHES

Astelia nervosa s.s.

Phormium cookianum

COMPOSITE HERBS

Abrotanella lineatis s.s.

Anaphalis sp. (*Helichrysum bellidiflorum* s.s.)

Brachyglottis sp.

Celmisia monroi ssp.

Leptinella sp. (i) (*L. pyrethri-foia* agg.)

L. sp. (ii) (unnamed; included in *L. squalida*, as ssp. *mediana*, by Lloyd and Webb, 1987)

Craspedia sp. (unnamed) (summer-green; lvs elliptic-spathulate, green both surfaces densely clad in hispid hairs up to 2mm long; lf margins faintly to distinctly white with cottony hairs; fls white)

Pseudognaphalium sp. (unnamed; aff. *P. luteoalbum*) (mtn sp.; lvs mostly oblong-spathulate to narrowly oblong, rounded)

Senecio glaucophyllus ssp.

glaucophyllus

S. waitavensis

Taraxacum magellanicum

DICOT HERBS OTHER THAN COMPOSITE

Acaena profundevicisa

Aciphylla feroxi

Anisotome aromatica

A. haastii

A. pilifera

Cardamine sp. (i) (*C. debilis* agg. (cf. "Long Style" of Pritchard 1957))

C. sp. (ii) (unnamed) (lvs mostly simple; blade ± reniform)

C. sp. (iii) (cf. "Scree Race" of Pritchard 1957)

Colobanthus affinis

C. canaliculatus

C. sp. (unnamed) (lvs and sepals strongly acicular; lvs unbordered; sepals 5, broader than lvs, without a thickened midrib)

Epilobium chlorifolium

E. cockayneanum

E. gracilipes

E. sp. (unnamed; included in *E. brunnescens*, as ssp. *minutiflorum*, by Raven and Engelhorn, 1971)

Euphrasia cheesemanii
E. sp. (unnamed; aff. *E. laingii*)
Forstera tenella
Galium perpusillum s.s.
Gentiana bellidifolia var.
G. filipes
Geranium sp. (aff. *G. microphyllum*)
Geum sp. (*G. parviflorum* agg.)
 (stock short; terminal leaflet
 about as long as broad; fls up
 to 13 mm diam.)
Gingidia decipiens
G. montana
Hydrocotyle sp. (unnamed;
 included in *H. novae-zeelandiae*,
 as var. *montana*, by Kirk 1899)
Myosotis sp. (*M. australis* agg.)
 (fls small, white)
Oreomyrrhis colensoi s.s. (incl.
O.e. var. hispida and *O.e. var.*
multifida)
Ourisia lactea ssp. *lactea*

Oxalis magellanica
Parahebe linifolia ssp. *linifolia*
P. lyallii
Plantago raoulii

Pratia angulata agg.
Ranunculus insignis
R. mirus

Scleranthus brockiei
Stellaria decipiens (incl. *S.*
parviflora)
Urtica incisa
Viola lyallii

Wahlenbergia albomarginata var.
albomarginata (incl. *W. pycnacea*
 var. *laxa*, *W. brockiei*, and *W. simp-*
sonii)

No. of species: 104.

5

REFERENCES

- Edgar, E. 1970: *Cyperaceae*. pp. 167-285 in "Flora of New Zealand".
Government Printer, Wellington. Vol. 2. 354 pp.
- Franklin, D.A. 1962: The Ericaceae in New Zealand (*Galearia* and
Pernettya). Trans. R. Soc. N.Z. Bot. 1: 155-73.
- Kirk, T. 1899: "The Students' Flora of New Zealand". Government Printer,
Wellington. 408 pp.
- Love, A.; Connor, H.E. 1982: Relationships and taxonomy of New Zealand
wheatgrasses. N.Z. J. Bot. 20: 169-86.
- Pritchard, G.G. 1957: Experimental taxonomic studies on species of *Card-*
amine henn. in New Zealand. Trans. R. Soc. N.Z. 85: 75-89.
- Raven, P.H.; Engelman, T. 1971: New taxa and new combinations in
Australasian *Epilobium* (Onagraceae). N.Z. J. Bot. 9: 345-50.
- Wardle, P. 1968: The taxonomy and distribution of the stipulate
species of *Pseudopanax* in New Zealand. N.Z. J. Bot. 6: 226-36.
- Zotov, V.D. 1965: Grasses of the subantarctic islands of the New
Zealand region. Rec. Dom. Mus. Wellington 5: 101-46.
- Lloyd, D.G.; Webb, C.J. 1987: The reinstatement of *Leptinella* at generic
rank, and the status of the 'Cotuleae' (Asteraceae, Anthemideae).
N.Z. J. Bot. 25: 99-105.