

XanthopSOROMA socCATUM

FAMILY

Pannariaceae

AUTHORITY

XanthopSOROMA socCATUM (R.Br. ex Cromb.) Elvebakk

FLORA CATEGORY

Lichen – Native

ENDEMIC TAXON

No

ENDEMIC GENUS

No

ENDEMIC FAMILY

No

STRUCTURAL CLASS

Lichens - Squamulose

CURRENT CONSERVATION STATUS

2018 | Not Threatened | Qualifiers: SO

BRIEF DESCRIPTION

Characterised by the corticolous habit; the squamulose thallus developed on a prominent, black, continuous fibrous to byssoid prothallus; thalline squamules small, 0.1–1.0 mm diam., round to irregular, scattered, rarely forming a continuous crust, consistently sorediate, upper surface pale greenish or yellowish (usnic acid), smooth, waxy or matt, with fine, silky, bristling crystals ($\times 10$ lens); cephalodia globose to glomerulate, purplish brown, scattered between thalline squamules on prothallus; apothecia rare, 0.1–1.2 mm diam., disc dark red-brown to blackish, margins waxy, crenulate-striate, occasionally granular-sorediate; and ellipsoidal ascospores, $15\text{--}17 \times 8\text{--}11 \mu\text{m}$

DISTRIBUTION

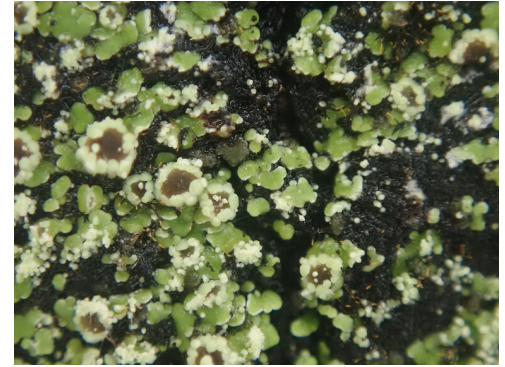
North Island: Northland to South Auckland (Waiotapu Valley), Wellington.

South Island: Nelson (Mt Arthur), Marlborough (Pelorus Bridge), Westland (Mt Brewster), Canterbury (Arthur's Pass, Black Birch Stream, Glencoe Stream Mt Cook), Otago (Lake Ohau, Makarora, Maungatua), Southland (Dusky Sound). **Stewart Island:** (Port Pegasus).

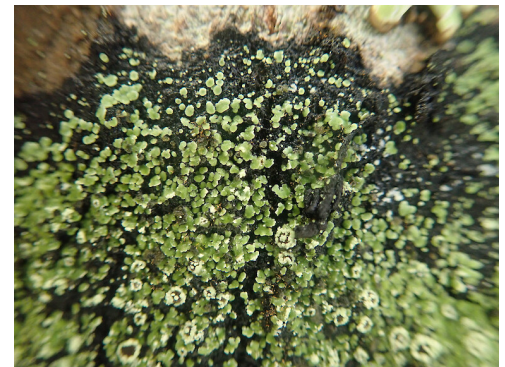
Known also from New South Wales and Tasmania.

HABITAT

Mainly West of Main Divide, reaching East coast near Dunedin (Maungatua). Epiphytic on trunks of *Fuscospora*, *Leptospermum* and *Griselinia*, and other trees and shrubs less commonly – also among mosses in rock crevices. In deep shade squamules are fewer and more scattered on a better-developed black prothallus. It tolerates deep shade, but is also common at forest margins in moderate to high-light.



Corticolous on beech, with soredia, Mavora Southland. Photographer: Marley Ford, Date taken: 08/06/2022, Licence: CC BY.



Corticolous on beech, with soredia, Mavora Southland. Photographer: Marley Ford, Date taken: 08/06/2022, Licence: CC BY.

DETAILED DESCRIPTION

Thallus small, squamulose, often widely scattered, on a prominent black, thin, continuous, fibrous or byssoid **prothallus**, 3-5(-10) cm diam. **Squamules** small, ± discrete, 0.1-1.0 mm diam., round to irregular, plane to subconvex, rarely forming a continuous crust, ± consistently sorediate, especially at centre, esorediate near margins, sometimes forming a diffract-areolate, sorediate crust centrally, some squamules ascending, white tomentose below. **Upper surface** pale greenish or yellowish-white, smooth, waxy or matt, commonly with fine, silky, bristling crystals (×10 lens). **Soredia** white, or yellowish, granular, surrounded by a halo of white, silky crystals. **Cephalodia** common, scattered, between squamules on prothallus, never developing on squamules, simple, globose to glomerulate, smooth, purplish-brown. **Apothecia** not common, scattered, sessile or subpedicellate, 0.1-1.2 mm diam., round to irregular, disc dark red- brown to blackish, matt, epruinose, not gyrose-etched, sometimes ± sorediate, margins crenulate-striate, waxy, occasionally granular-sorediate, thalline exciple wrinkled-striate, ± sorediate. **Ascospores** 15-17 × 11 µm.

Chemistry: Dechloropannarin and usnic acid (visible as minute, silky, bristling crystals on surface – ×10 lens).

SIMILAR TAXA

Similar to *Xanthosporoma contextum* but with soredia.

SUBSTRATE

Corticolous

ATTRIBUTION

Fact sheet prepared by Marley Ford (5 December 2023). Brief description, Distribution, Habitat, Features and Similar taxa sections copied from Galloway (1985; 2007).

REFERENCES AND FURTHER READING

Galloway D.J. 1985: *Flora of New Zealand: Lichens*. Wellington: PD Hasselberg, Government Printer. 662 pp.
Galloway D.J. 2007: *Flora of New Zealand: Lichens, including lichen-forming and lichenicolous fungi*. 2nd edition. Lincoln, Manaaki Whenua Press. 2261 pp.

MORE INFORMATION

<https://www.nzpcn.org.nz/flora/species/xanthosporoma-soccatum/>