

# Toninia bullata

## SYNONYMS

Lecidea bullata

## FAMILY

Ramalinaceae

## AUTHORITY

Toninia bullata (Meyen & Flot.) Zahlbr.

## FLORA CATEGORY

Lichen – Native

## STRUCTURAL CLASS

Lichens - Squamulose

## CURRENT CONSERVATION STATUS

2018 | Not Threatened | Qualifiers: SO

## BRIEF DESCRIPTION

Characterised by the terricolous habit (acid soils); bullate to columnar, brown to reddish brown, dull to glossy, simple to branched squamules, often swollen at apices and with punctiform pseudocyphellae developing into pores; marginate, epruinose, black apothecia developing at tips of squamules; a blue-green (K-, N+violet) epithecium; a colourless to pale-brown hypothecium; and acicular, 3–7-septate ascospores, 37–55.5 × 3–4 µm.

## DISTRIBUTION

**North Island:** Gisborne (Mt Hikurangi). **South Island:** Nelson (Mt Arthur), Canterbury (Cass) to Fiordland. **Stewart Island.**

Known also from SE Australia, Tasmania, South Africa, Argentina, Chile (including Juan Fernandez), Ecuador, Venezuela, Mexico and the USA (Colorado).

## HABITAT

Alpine or subalpine, on both sides of the Main Divide; especially common on damp, schist faces on the Central Otago Mountains. On soil or among bryophytes in drainage cracks in rock, often associated with *Coccocarpia palmicola*, *Massalongia carnosa*, *Pannaria hookeri*, *Parmelia signifera* and *Siphula decumbens*.

## DETAILED DESCRIPTION

**Thallus** greyish-white to pale greenish-grey in shaded situations, matt or shining, smooth to ± granular or uneven, spreading, 5–8(-10) cm diam., ± orbicular, margins well-defined to ± indistinct, usually corticolous, rarely saxicolous. **Apothecia** sessile, frequent centrally, often crowded, lecanorine (algae in excipulum small and easily overlooked), margins thick, entire, inflexed when young, becoming crenulate with age, disc plane, to 2.5 mm diam., orange-yellow, granular-pruinose. **Ascospores** colourless 85–125 × 30–45(-50) µm.

## SUBSTRATE

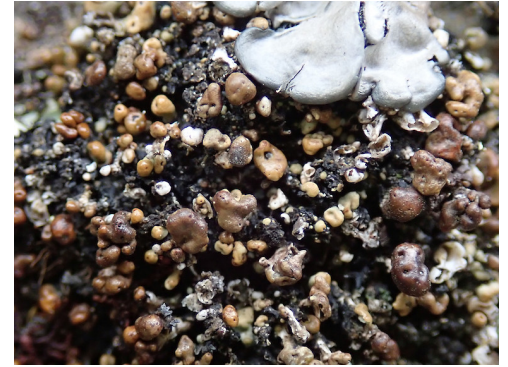
Terricolous (ground)

## ETYMOLOGY

**bullata:** Blistered

## ATTRIBUTION

Fact sheet prepared by Melissa Hutchison (2 February 2022). Brief description, Distribution, Habitat, and Features sections copied from Galloway (1985, 2007).



Sealey Tarns, Mt Cook National Park.  
Photographer: Melissa Hutchison, Date taken:  
14/12/2019, Licence: CC BY-NC.



Sealey Tarns, Mt Cook National Park.  
Photographer: Melissa Hutchison, Date taken:  
14/12/2019, Licence: CC BY-NC.

## REFERENCES AND FURTHER READING

- Galloway D.J. 1985: *Flora of New Zealand: Lichens*. Wellington: PD Hasselberg, Government Printer. 662 pp.
- Galloway D.J. 2007: *Flora of New Zealand: Lichens, including lichen-forming and lichenicolous fungi*. 2nd edition. Lincoln, Manaaki Whenua Press. 2261 pp.

## MORE INFORMATION

<https://www.nzpcn.org.nz/flora/species/toninia-bullata/>