

Robinia pseudoacacia

COMMON NAME

black locust

FAMILY

Fabaceae

AUTHORITY

Robinia pseudoacacia L.

FLORA CATEGORY

Vascular – Exotic

STRUCTURAL CLASS

Trees & Shrubs - Dicotyledons

NVS CODE

ROBPSE

CONSERVATION STATUS

Not applicable

HABITAT

Terrestrial.

DETAILED DESCRIPTION

Deciduous tree up to 25 m high. The compound pinnate leaves are 20-30 cm long, bearing 12-15 elliptic leaflets arising more or less opposite one another. Branches are scattered with sharp, stipular spines c. 1 cm long. Inflorescence is a raceme with numerous white flowers, each about 1 cm long.

FLOWERING

November, December, January

FLOWER COLOURS

White

LIFE CYCLE

Perennial. Seed and vegetative spread by suckering.

YEAR NATURALISED

1870

ORIGIN

C. and E. North America

REASON FOR INTRODUCTION

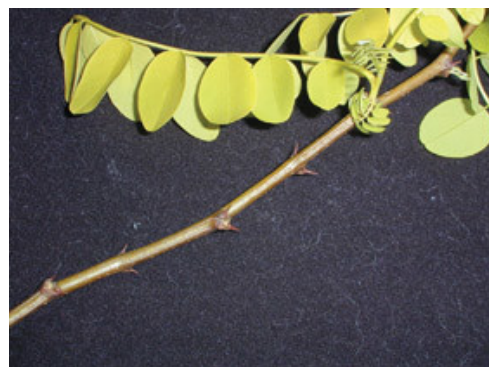
Ornamental

MORE INFORMATION

<https://www.nzpcn.org.nz/flora/species/robinia-pseudoacacia/>



Hutt River Trail north of Stokes Valley.
Photographer: Jeremy R. Rolfe, Date taken:
09/05/2006, Licence: CC BY.



Robinia pseudacacia. Photographer: Graeme La
Cock, Licence: CC BY-NC.