

# Psoroma melanizum

## FAMILY

Pannariaceae

## AUTHORITY

*Psoroma melanizum* Zahlbr.

## FLORA CATEGORY

Lichen – Native

## ENDEMIC TAXON

Yes

## ENDEMIC GENUS

No

## ENDEMIC FAMILY

No

## STRUCTURAL CLASS

Lichens - Crustose

## CURRENT CONSERVATION STATUS

2018 | Not Threatened

## BRIEF DESCRIPTION

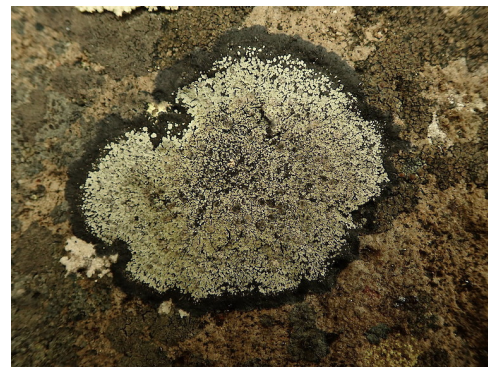
Characterised by the saxicolous habit; the squamulose thallus, closely attached in compact rosettes and often mosaic-forming, 1–3 cm diam., bordered by a thin, black, bysoid prothallus, 1–2 mm wide; the thalline squamules are minute, 0.2–1.0 mm diam., yellowish brown to pale or whitish at margins, often secondarily lobulate and dispersed at margins, coalescent centrally forming a diffract-areolate crust; the scattered cephalodia, marginal on squamules, wrinkled-plicate; the frequent, sessile, predominantly central apothecia, 0.5–1.5 mm diam., the disc brown-black, plane to subconcave, with thin, crenulate margins concolorous with thallus; and subglobose to globose ascospores, 10–15(–16.5)  $\mu\text{m}$  diam., with oily-granular contents and a perispore 1–3  $\mu\text{m}$  thick.

## DISTRIBUTION

**South Island:** Nelson (Brook Stream), Marlborough (above Ship Cove), Canterbury (Dyer's Pass, Banks Peninsula), Otago (Trotter's Gorge, Mount Watkin, Silver Peaks, Hammond's Hill Merton, Boyd's Bush N Taieri, Dunedin, Goat Island Otago Harbour, Akatore, Tautuku Bay), Southland (Doubtful Sound, Supper Cove Dusky Sound). **Stewart Island:** (Noble Island, Port Pegasus). **Auckland Islands.**

## HABITAT

On coastal rocks above *Verrucaria* zone, and on rocks in damp, humid sites in coastal and lowland forest, s.l. to 400 m. It associates with *Dirina neozelandica*, *Opegrapha diaphoriza*, *Pertusaria graphica*, *Placopsis cribellans* and *Tylothallia pahiensis* on exposed rocky shore habitats, while in humid, shaded sites, it associates with species of *Leptogium*, *Pannaria leproloma*, *P. minutiphylla* and *Psoromidium aleuroides*.



Photographer: Marley Ford, Licence: CC BY-NC.



Photographer: Marley Ford, Licence: CC BY-NC.

## DETAILED DESCRIPTION

**Thallus** squamulose, closely attached, in compact rosettes, often confluent in mosaics, 1-3 cm diam., bordered by a short, black, byssoid prothallus, 1-2 mm wide. **Squamules** minute, 0.2-1.0 mm diam., round to irregular, concave to plane to subconvex, margins entire, slightly thickened, often secondarily lobulate and dispersed at margins, coalescing, imbricate centrally, forming a diffract-areolate crust, prothallus visible between areolae, yellowish to pale whitish at margins, whole thallus superficially blackened, smooth to coriaceous, shining, waxy, epruinose.

**Cephalodia** frequent, scattered, marginal on squamules, occasionally laminal or on hyphae of prothallus, ± rosette-shaped, dark purplish-grey, rising above squamules, wrinkled-plicate, smooth to slightly granular. **Apothecia** sessile, frequent centrally, rarely marginal, round to irregular, 0.5-1.5 mm diam., disc brown-black, plane to subconcave, matt, epruinose, margins thin, pale or concolorous with thallus, crenulate. **Ascospores** ellipsoid to subglobose, 12 µm diam., or smaller, 4-6 × 3 µm.

## SUBSTRATE

Saxicolous

## ATTRIBUTION

Fact sheet prepared by Marley Ford (25 August 2021). Brief description, Distribution, Habitat, and Features sections copied from Galloway (1985; 2007).

## REFERENCES AND FURTHER READING

- Galloway D.J. 1985: *Flora of New Zealand: Lichens*. Wellington: PD Hasselberg, Government Printer. 662 pp.  
Galloway D.J. 2007: *Flora of New Zealand: Lichens, including lichen-forming and lichenicolous fungi*. 2nd edition. Lincoln, Manaaki Whenua Press. 2261 pp.

## MORE INFORMATION

<https://www.nzpcn.org.nz/flora/species/psoroma-melanizum/>