

# Physcia albata

## SYNONYMS

*Parmelia albata* F.Wilson

## FAMILY

Physciaceae

## AUTHORITY

*Physcia albata* (F.Wilson) Hale

## FLORA CATEGORY

Lichen – Native

## ENDEMIC TAXON

No

## ENDEMIC GENUS

No

## ENDEMIC FAMILY

No

## STRUCTURAL CLASS

Lichens - Foliose

## CURRENT CONSERVATION STATUS

2018 | Not Threatened | Qualifiers: SO

## BRIEF DESCRIPTION

Characterised by the corticolous habit; the broad, rounded lobes with entire margins; the smooth, matt, epruinose upper surface; and soralia in spreading patches, arising from eroding pustules or papillae and spreading more widely over lamina, often exposing areas of white medulla beneath.

## DISTRIBUTION

**North Island:** Northland (Radar Bush), Gisborne (Mt Taitai), Taranaki (Stratford). **South Island:** Nelson (Kaihoka, Roding River Valley), Otago (Makarora).

Known also from East and South Africa, South America, where it appears to be rare.

## HABITAT

On both native and introduced trees, especially common on *\*Acer pseudoplatanus*, also on volcanic rocks.

## DETAILED DESCRIPTION

**Thallus** orbicular to irregular, very variable in size, usually 5–10 cm diam., loosely attached. **Lobes** mostly broadly rounded, apices rounded and incised. **Upper surface** whitish grey, darkening at apices, usually without pruina; sorediate. **Soralia** laminal, maculiform initially as small pustules or cracks, joining to form larger, confluent patches. **Soredia** granular, whitish. **Lower surface** white to ash-grey, rarely darker, with numerous pale to grey-black, simple rhizines. Upper and lower cortices paraplectenchymatous. **Apothecia** rare (not seen in NZ material) to 3 mm diam., thalline margin smooth to crenulate, sometimes dissolving into soredia. **Ascospores** *Pachysporaria* -type, (17–)20–25 × 8–12 µm. **Pycnidia** rare.

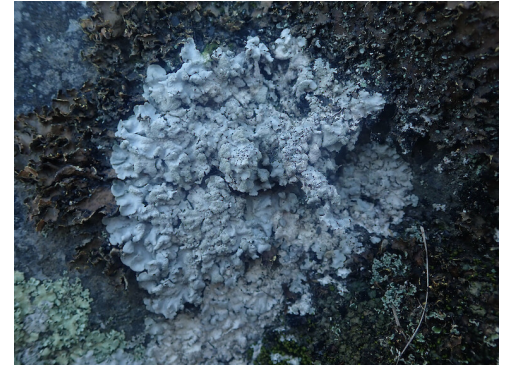
**Chemistry:** Upper cortex and medulla K+ yellow; containing atranorin and zeorin.

## SIMILAR TAXA

The non-sorediate counterpart species, *Physcia dilatata*, is so far not known from New Zealand.

## SUBSTRATE

Corticolous, saxicolous



Saxicolous on coastal rock, Cape Palliser Wairarapa. Photographer: Marley Ford, Date taken: 03/07/2022, Licence: CC BY.



Saxicolous on coastal rock, Cape Palliser Wairarapa. Photographer: Marley Ford, Date taken: 03/07/2022, Licence: CC BY.

### **ATTRIBUTION**

Fact sheet prepared by Marley Ford (5 August 2022). Brief description, Distribution, Habitat, and Features sections copied from Galloway (2007).

### **REFERENCES AND FURTHER READING**

Galloway D.J. 2007: *Flora of New Zealand: Lichens, including lichen-forming and lichenicolous fungi*. 2nd edition. Lincoln, Manaaki Whenua Press. 2261 pp.

### **MORE INFORMATION**

<https://www.nzpcn.org.nz/flora/species/physcia-albata/>