

Parmotrema mellissii

SYNONYMS

Parmelia mellissii

FAMILY

Parmeliaceae

AUTHORITY

Parmotrema mellissii (C.W.Dodge) Hale

FLORA CATEGORY

Lichen – Native

ENDEMIC TAXON

No

ENDEMIC GENUS

No

ENDEMIC FAMILY

No

STRUCTURAL CLASS

Lichens - Foliose

CURRENT CONSERVATION STATUS

2018 | At Risk – Naturally Uncommon | Qualifiers: DP, SO

BRIEF DESCRIPTION

Characterised by the corticolous habit; the loosely adnate, membranaceous thallus; the long, abundant marginal cilia; the crenate to dissected-isidiate lobe margins; the terete, brown-tipped, isidia which become granular-sorediate and ciliate; and the presence of alectoronic acid and α -collatolic acid in the medulla (UV+ blue-white).

DISTRIBUTION

North Island: Northland (Three Kings Islands Hokianga, Whangarei), Auckland (Piha, Karekare, Waitakere Ranges).

Pantropical. Known also from Australia, Africa, Macaronesia, St Helena, India, Taiwan, Japan, Thailand, and North, Central and South America.

HABITAT

On trees and shrubs in northern coastal forest.

DETAILED DESCRIPTION

Thallus orbicular to spreading, loosely attached, 6-15 cm diam., corticolous, rarely saxicolous. **Lobes** rounded, 5-12 mm wide, margins crenate to dissected-isidiate, ciliate, cilia numerous, black, 1-3 mm long. **Upper surface** smooth, pale grey to whitish, matt, slightly reticulate-cracked, isidiate, especially at or near margins, or sorediate-isidiate, isidia soon becoming granular and sorediate. Isidia at first small, simple, terete, delicate, brown-tipped, becoming granular-sorediate and ciliate, cilia black, to 3 mm tall. Soralia marginal, derived from isidia, capitate or glomerulate, eventually becoming recurved. **Lower surface** black, with a naked, tan or whitish, marginal zone. Rhizines central, black, simple. **Apothecia** not seen.

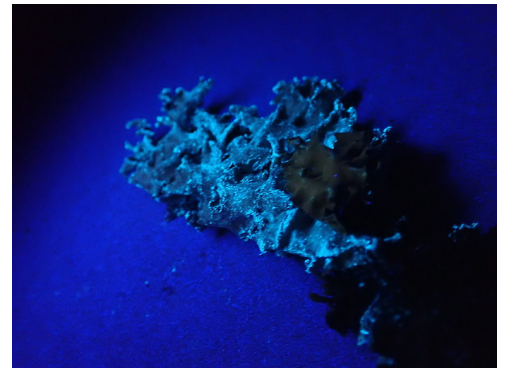
Chemistry: Cortex K+ yellow; medulla K-, C-, KC+ red, Pd-, UV+ blue-white; containing atranorin, chloroatranorin, alectoronic acid and α -collatolic acid.

SUBSTRATE

Corticolous



Photographer: Peter J. de Lange, Licence: CC BY-NC.



UV+. Photographer: Marley Ford, Licence: CC BY-NC.

ATTRIBUTION

Fact sheet prepared by Marley Ford (5 August 2021). Brief description, Distribution, Habitat, Features and Similar taxa sections copied from Galloway (1985) and Galloway (2007).

REFERENCES AND FURTHER READING

Galloway D.J. 1985: *Flora of New Zealand: Lichens*. Wellington: PD Hasselberg, Government Printer. 662 pp.
Galloway D.J. 2007: *Flora of New Zealand: Lichens, including lichen-forming and lichenicolous fungi*. 2nd edition. Lincoln, Manaaki Whenua Press. 2261 pp.

MORE INFORMATION

<https://www.nzpcn.org.nz/flora/species/parmotrema-mellissii/>