

# Lecanora melacarpella

## SYNONYMS

*Lecanora haywardiorum*

## FAMILY

Lecanoraceae

## AUTHORITY

*Lecanora melacarpella* Müll.Arg.

## FLORA CATEGORY

Lichen – Native

## ENDEMIC TAXON

No

## ENDEMIC GENUS

No

## ENDEMIC FAMILY

No

## STRUCTURAL CLASS

Lichens - Crustose

## CURRENT CONSERVATION STATUS

2018 | Not Threatened | Qualifiers: SO

## BRIEF DESCRIPTION

Characterised by the saxicolous habit (coastal rocks); the dark-brown apothecial discs, the large and small crystals in the amphithecium, the *L. glabrata*-type epithecium.

## DISTRIBUTION

**North Island:** Northland (Bay of Islands, Ririwha Island, Poor Knights Islands, Hen & Chickens Islands, Great Barrier Island, Little Barrier Island), South Auckland (Coromandel Peninsula, Rabbit Island, Penguin Island). Also known from New South Wales and Queensland.

## HABITAT

On coastal rocks.

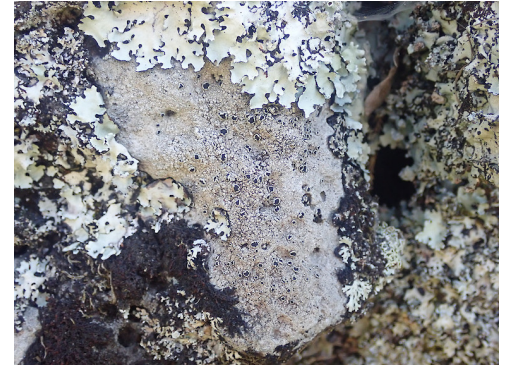
## DETAILED DESCRIPTION

**Thallus** crustose, uniform, whitish to yellowish white or greyish white, continuous or dispersed verrucose to verruculose, epruinose. **Margins** indefinite or definite, sometimes with a whitish prothallus. Apothecia sessile, constricted at base, 0.6–1.8 mm diam.; discs very dark brown to brown-black, epruinose; margins smooth to verruculose or verrucose, prominent. **Amphithecium** with large crystals, but also small K-soluble crystals abundant. **Parathecium** hyaline with small, K-soluble crystals, bright whitish in polarised light, to 10 µm thick. **Epithecium** *glabrata*-type, without crystals, with a 2-µm-high hyaline layer above; dark in polarised light, pigmented dark-brown to brown. **Cortex** 25 µm thick. **Hymenium** hyaline, 65–85 µm tall. **Hypothecium** hyaline. **Paraphyses** septate, c. 1.5–2 µm thick, only slightly swollen at apices. **Asci** clavate, 50–70 × 10–18 µm. **Ascospores** ellipsoidal, (9–)10.5–13.5(–15.5) × (5.5–)7.5–8.5(–9.5) µm.

**Chemistry:** Thallus and apothecial margins K+ yellow, C–, KC–, Pd+ yellow-orange; containing atranorin (major), zeorin (major), unidentified triterpenoid (minor) and chloroatranorin (minor).

## SIMILAR TAXA

Superficially it resembles *Tephromela atra* but differs in having a hyaline hymenium, a different ascus type, and a different chemistry.



Rare lichen on basalt rock wall, Cornwall Park Auckland. Photographer: Marley Ford, Date taken: 03/01/2022, Licence: CC BY.



Rare lichen on basalt rock wall, Cornwall Park Auckland. Photographer: Marley Ford, Date taken: 03/01/2022, Licence: CC BY.

## **SUBSTRATE**

Saxicolous

## **ATTRIBUTION**

Fact sheet prepared by Marley Ford (3 August 2022). Brief description, Distribution, Habitat, Features, Similar Taxa and Extra information sections copied from Galloway (2007).

## **REFERENCES AND FURTHER READING**

Fact sheet prepared by Marley Ford (3 August 2022). Brief description, Distribution, Habitat, Features, and Similar Taxa sections copied from Galloway (2007)

## **MORE INFORMATION**

<https://www.nzpcn.org.nz/flora/species/lecanora-melacarpella/>