

Goebelobryum unguiculatum

COMMON NAME

Liverwort

FAMILY

Acrobolbaceae

AUTHORITY

Goebelobryum unguiculatum (Hook.f. et Taylor) Grolle

FLORA CATEGORY

Non-vascular – Native

ENDEMIC TAXON

No

ENDEMIC GENUS

No

ENDEMIC FAMILY

No

STRUCTURAL CLASS

Liverworts

NVS CODE

GOEUNG

CURRENT CONSERVATION STATUS

2009 | Threatened – Nationally Endangered | Qualifiers: SO

PREVIOUS CONSERVATION STATUS

2004 | Threatened – Nationally Endangered

DISTRIBUTION

Indigenous. Australia and New Zealand. In New Zealand known from the North, South and Chatham Islands.

HABITAT

Poorly drained substrates within gumland scrub and pakihi. Also frequent in mainly high moor peat bogs where at times it can be the dominant vegetation.

FRUITING

Rarely seen in *G. unguiculatum* s.s., occasionally produced throughout the year by *G. aff. unguiculatum* (see notes below for taxonomy)

THREATS

Habitat loss - drainage of peat bogs and conversion of gumland and pakihi into farmland or housing sites. This species responds well to frequent fires and soon vanishes as vegetation gets taller

SUBSTRATE

Poorly drained clay and sandy soils overlying iron pans, and in peat bogs (especially those dominated by restiads)

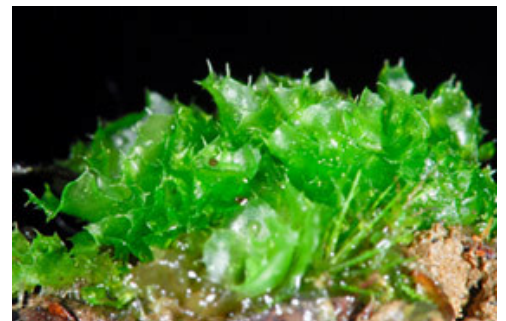
Where To Buy

MORE INFORMATION

<https://www.nzpcn.org.nz/flora/species/goebelobryum-unguiculatum/>



Goebelobryum unguiculatum s.s. - note open habit, spreading leaves and prominent ciliate margins, Waikumete. Jul 2007. Photographer: Jeremy R. Rolfe, Licence: CC BY.



Goebelobryum unguiculatum s.s. - note open habit, spreading leaves and prominent ciliate margins, Waikumete. Jul 2007. Photographer: Jeremy R. Rolfe, Licence: CC BY.