

# Catillaria glaucogrisea

## FAMILY

Catillariaceae

## AUTHORITY

Catillaria glaucogrisea Fryday

## FLORA CATEGORY

Lichen – Native

## ENDEMIC TAXON

Yes

## STRUCTURAL CLASS

Lichens - Crustose

## CURRENT CONSERVATION STATUS

2018 | At Risk – Naturally Uncommon | Qualifiers: DP, IE, OL

## BRIEF DESCRIPTION

Characterised by the saxicolous (basicolous rocks) habit; the pale-grey, areolate thallus; immersed to sessile, black, lecideine apothecia; a colourless hypothecium; a colourless hymenium, 65–70 µm tall; paraphyses with swollen, blue-black-pigmented apical caps; *Catillaria*-type asci; and hyaline, 1(–2)-septate ascospores, 10–12 × 4–6 µm.

## DISTRIBUTION

**Campbell Island. Chatham Islands.**

## HABITAT

Previously only known from the type locality. On hard limestone rocks.

## DETAILED DESCRIPTION

**Thallus** crustose, effuse, areolate, pale lead-grey, 0.15 mm thick, without a marginal prothallus. **Areolae** irregular, flat to subconcave, 0.5–0.7 mm diam., separated by deep cracks. **Medulla** l-. **Apothecia** common, rounded, lecideine, 1–(2–3) per areole, immersed at first, disc concave, becoming sessile with flat, roughened disc, (0.2–)0.25–0.3(–0.4) mm diam., margins scarcely raised to 0.02 mm wide. **Epithecium** blue-black, 5–10 µm thick (K–, N+ red). **Hymenium** hyaline, l+ blue, 65–70 µm tall. **Paraphyses** simple or sparingly branched, 1.5–3 µm wide, apices swollen to 5 µm diam., blue-black (K–. N+ red). **Hypothecium** colourless, 20–30 µm thick. **Asci** cylindrical, 465–50 × 15–17 µm. **Ascospores** hyaline, 1(–2)-septate, 10–12 × 4–6 µm.

## SUBSTRATE

Saxicolous

## ATTRIBUTION

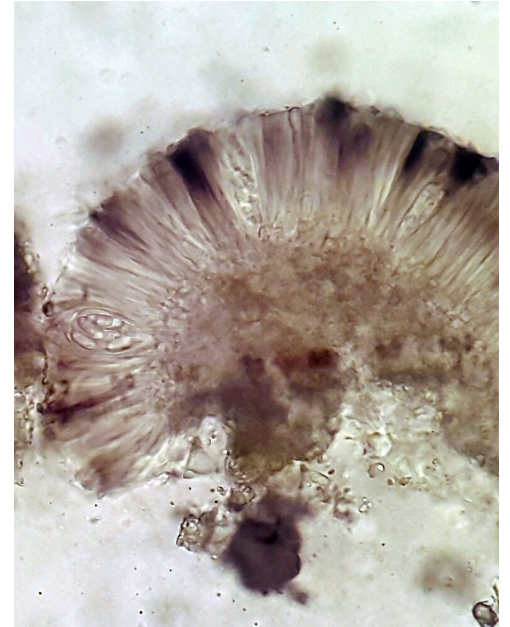
Fact sheet prepared by Marley Ford (21 January 2024). Brief description, Distribution, Habitat, and Features sections copied from Galloway (2007).

## REFERENCES AND FURTHER READING

Galloway D.J. 2007: *Flora of New Zealand: Lichens, including lichen-forming and lichenicolous fungi*. 2nd edition. Lincoln, Manaaki Whenua Press. 2261 pp.

## MORE INFORMATION

<https://www.nzpcn.org.nz/flora/species/catillaria-glaucogrisea/>



Saxicolous on shells in sand dunes, Henga Chatham Islands. Photographer: Marley Ford, Date taken: 21/08/2019, Licence: CC BY.



Saxicolous on shells in sand dunes, Henga Chatham Islands. Photographer: Marley Ford, Date taken: 21/08/2019, Licence: CC BY.