

# Bacidia leucocarpa

## SYNONYMS

*Bacidia albidolutea*, *B. chrysocharpa*, *B. pseudophana*, *Lecidea albidolutea*, *L. gilvorufella*, *L. leucocarpa*, *L. perluta*, *L. pseudophana*, *Patellaria albidolutea*, *P. leucocarpa*, *P. pseudophana*

## FAMILY

Ramalinaceae

## AUTHORITY

*Bacidia leucocarpa* C.Knight

## FLORA CATEGORY

Lichen – Native

## ENDEMIC TAXON

No

## ENDEMIC GENUS

No

## ENDEMIC FAMILY

No

## STRUCTURAL CLASS

Lichens - Crustose

## CURRENT CONSERVATION STATUS

2018 | Data Deficient | Qualifiers: OL, SO

## BRIEF DESCRIPTION

Characterised by the corticolous habit; pale greenish, whitish grey to olivaceous, minutely verrucose-papillate or granular thallus; pale yellowish fawn to brown-pink, sessile to subinnate apothecia; and 3–10-septate, spirally curved ascospores, (35–)40–55(–70) × 1.5–2.5 μm.

## DISTRIBUTION

**North Island:** Wellington. **Chatham Islands.**

Previously known only from the type collections in Wellington, but recently found on the Chatham Islands (de Lange 2015). The species is probably widely distributed in damp, shaded, undisturbed habitats (Galloway 2007).

Also in Australia (Tasmania).

## HABITAT

On bark in damp, shaded, undisturbed habitats. Associated with *Coenogonium luteum* and species of *Leptogium* and *Sticta*.

## DETAILED DESCRIPTION

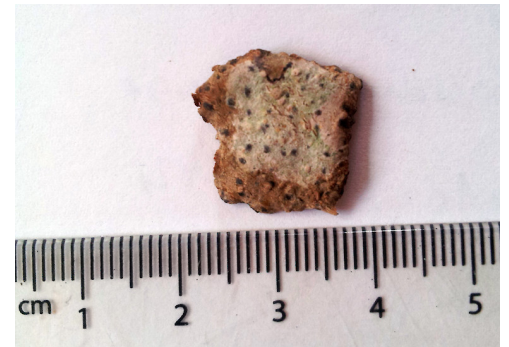
**Thallus** pale greenish or whitish-grey to olive-glaucous, continuous or ± areolate-cracked, or minutely verrucose-rugose or papillate or ± granular in parts, in patches 2–5(–8) cm diam., surface matt, not scabrid. **Apothecia** sessile to ± immersed, plane to convex, immarginate, 0.1–1.2 mm diam., round to irregular, scattered, pale yellowish-fawn to pinkish-brown, waxy, smooth, epruinose. Epithecium pale olive-brownish 4–15 μm thick. Hymenium colourless, 65–90 μm tall. Hypothecium golden brown. **Ascospores** (3–)5–8(–10)-septate, (35–)40–55(–68) × 1.5–2.5 μm, spirally curved.

## SUBSTRATE

Corticolous



Photographer: Bill Malcolm, Licence: All rights reserved.



Chatham Island/Rekohu. Photographer: Peter J. de Lange, Licence: Public domain.

### ATTRIBUTION

Fact sheet prepared by Melissa Hutchison (30 August 2021). Brief description, Distribution, Habitat, and Features sections copied from Galloway (1985, 2007).

### REFERENCES AND FURTHER READING

- de Lange P.J. 2015: Observation of *Bacidia leucocarpa* on iNaturalistNZ. <https://inaturalist.nz/observations/2004172>.
- Galloway D.J. 1985: *Flora of New Zealand: Lichens*. Wellington: PD Hasselberg, Government Printer. 662 pp.
- Galloway D.J. 2007: *Flora of New Zealand: Lichens, including lichen-forming and lichenicolous fungi*. 2nd edition. Lincoln, Manaaki Whenua Press. 2261 pp.

### MORE INFORMATION

<https://www.nzpcn.org.nz/flora/species/bacidia-leucocarpa/>