

Agonimia pacifica

SYNONYMS

Agonimiella pacifica

FAMILY

Verrucariaceae

AUTHORITY

Agonimia pacifica (H.Harada) Diederich

FLORA CATEGORY

Lichen – Native

ENDEMIC TAXON

No

ENDEMIC GENUS

No

ENDEMIC FAMILY

No

STRUCTURAL CLASS

Lichens - Squamulose

CURRENT CONSERVATION STATUS

2018 | Data Deficient | Qualifiers: SO

BRIEF DESCRIPTION

Characterised by the lichenicolous habit; the very small, squamulose thallus; exposed blackish perithecia; very large, strongly muriform ascospores; and an absence of hymenial algae.

DISTRIBUTION

North Island: Northland (Te Mika). Recently recorded in the Waikatō (Hutchison 2022). Still very poorly collected and understood in New Zealand.

Western Pacific. Known from Japan, Korea, Papua New Guinea and Brazil and Taiwan.

HABITAT

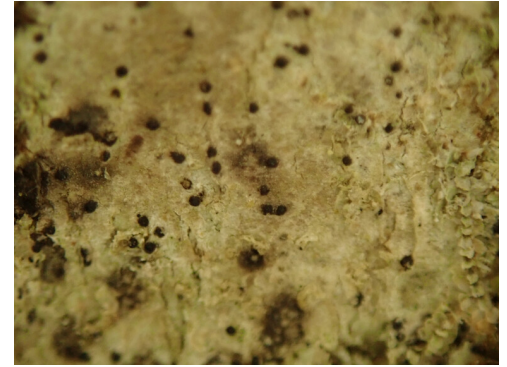
Lichenicolous. Recorded on *Pseudocyphellaria coriacea* in Northland (Te Mika). Elsewhere in its range the species grown on either bark or rock (Harada 1993: 504).

DETAILED DESCRIPTION

Thallus squamulose, usually of densely aggregated squamules and appearing almost subcrustose, to ±scattered, loosely or tightly attached to substratum, to 5 cm diam. **Prothallus** whitish, thin, indistinct. **Lobes** radiately or irregularly branched or dissected, to 0.05 mm wide, adnate or slightly ascending, discrete or contiguous. **Upper surface** pale- to dark-green, tinged brownish, matt, smooth, plane to convex. **Lower surface** pale greenish or whitish, with whitish rhizohyphae. **Perithecia** common, scattered, upper parts exposed, below clothed with squamules, spherical at first becoming ovoid or obpyriform (0.2–)0.4–0.8(–1.0) mm tall and 0.2–0.4 mm wide, grey or blackish or ±brownish, dull or glossy. **Exciple** smooth, very dark-brown to black in outer parts, very dark-brown to hyaline in inner parts, 30–50 µm thick at sides. **Periphyses** simple, 50 µm long and 2.5 µm diam. **Hypothecium** concave above, to 25 µm thick at centre. Hymenial algae absent. **Hymenium** I+ faint blue. **Asci** clavate, 125–250 × 25–40 µm. **Ascospores** 1–4 per ascus, hyaline, strongly muriform, thin-walled, ellipsoidal, oval to subfusiform, 45–230 × (15–)22–35 µm.

SUBSTRATE

Lichenicolous



On tree privet, in the Waikatō. Photographer: Melissa Hutchison, Date taken: 23/02/2022, Licence: CC BY-NC.



On tree privet, in the Waikatō. Photographer: Melissa Hutchison, Date taken: 23/02/2022, Licence: CC BY-NC.

ETYMOLOGY

pacifica: Of the Pacific Ocean.

First collected by the late John Bartlett, 6.ii.1981 (BM). Recorded by Kondratyuk & Galloway (1995: 340) as *Agonimia* sp.

ATTRIBUTION

Fact sheet prepared by Melissa Hutchison (14 June 2023). Brief description, Distribution, Habitat, Features and Extra Information sections copied from Galloway (2007).

REFERENCES AND FURTHER READING

- Galloway D.J. 2007: *Flora of New Zealand: Lichens, including lichen-forming and lichenicolous fungi*. 2nd edition. Lincoln, Manaaki Whenua Press. 2261 pp.
- Harada H. 1993: *Agonimiella*, a new genus in the family Verrucariaceae (Lichenes). *Nova Hedwigia* 57: 503-510.
- Hutchison M. 2022: iNaturalist observation. <https://inaturalist.nz/observations/109993808>. Date accessed: 14 June 2023.
- Kondratyuk S.Y. and Galloway D.J. 1995: Lichenicolous fungi and chemical patterns in *Pseudocyphellaria*. *Bibliotheca Lichenologica* 57: 327-345.

MORE INFORMATION

<https://www.nzpcn.org.nz/flora/species/agonimia-pacifica/>